



T H E B R I A R
C O L L E C T I O N

HOBSONVILLE, AUCKLAND

finesse



Welcome home to The Briar Collection,
a boutique collection of architecturally
designed homes.

briarcollection.co.nz



Artist impression

Brand new freestanding homes in top location

These contemporary freestanding homes feature open-plan ground floor living flowing onto a large outdoor deck, perfect for entertaining.

The kitchens are thoughtfully designed with engineered stone benchtops, quality fixtures and fittings, soft-close drawers and an appliance package that includes a stainless dishwasher, coupled with a generous walk-in pantry, these kitchens are sure to impress!

Upstairs, the four substantial queen bedrooms have excellent wardrobe storage. The master bedrooms feature a walk-through wardrobe to a private ensuite. The bathrooms and ensuites showcase quality tiles and fittings from

well-known New Zealand brands and a feature bath in the main bathrooms.

Located within the popular Orion Point precinct, these brand new homes are well located to benefit from the nearby retail, recreational and educational amenities offered in the greater Hobsonville area.

Construction of Briar Court homes will begin soon. They are due for completion in late 2022. All Finesse homes are built to meet healthy homes and modern living standards. In addition, each home comes complete with a 10-year Master Build Guarantee, fully landscaped and ready to move straight into upon completion.

FEATURES

- A large outdoor deck flows off the living area
- Open plan designer kitchen with engineered stone benchtops and a walk-in pantry
- Kitchen appliance package including stainless dishwasher
- Quality fixtures and fittings throughout
- Four generously sized bedrooms
- Heat pump and fully insulated
- Double glazed joinery throughout with plenty of large windows allowing for maximum natural light
- Single garage, plus dedicated off-street car park
- Meets Healthy Homes Standards
- 10-year Master Build Guarantee
- Freehold title



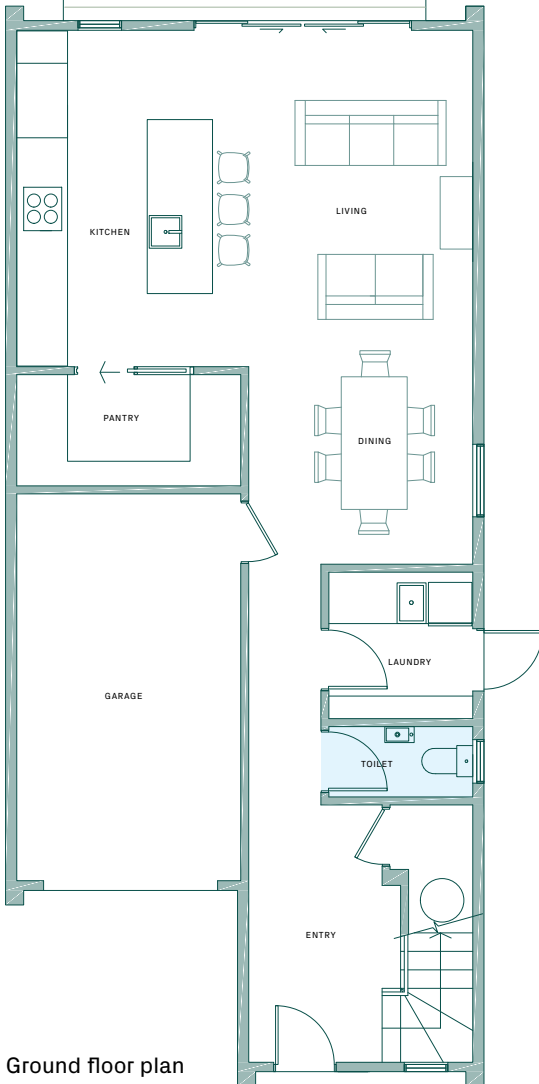
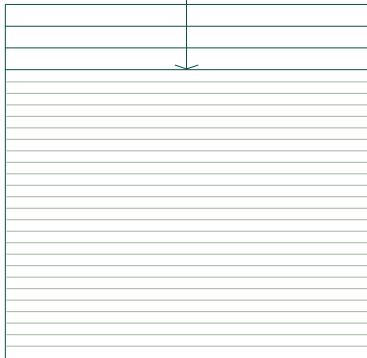
Briar Court



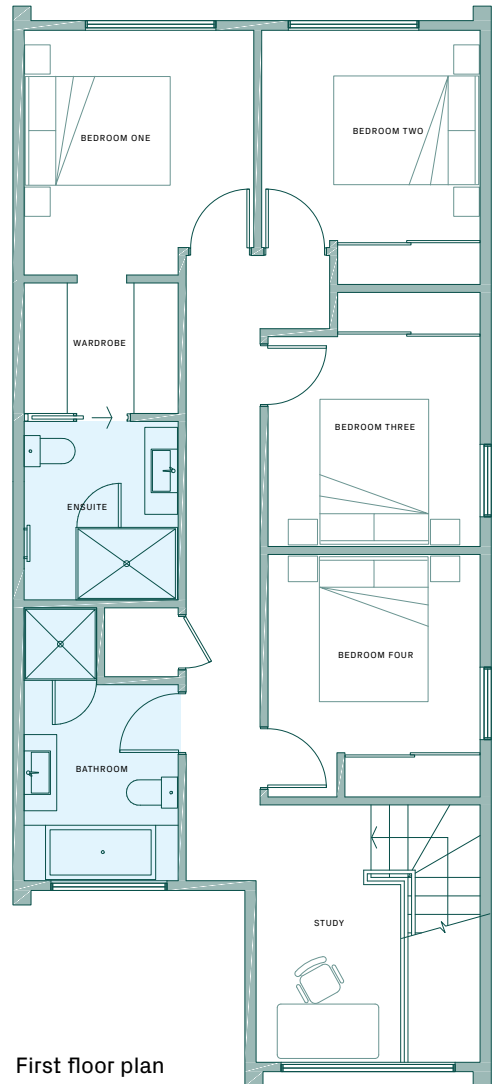
Lot 59 23 Bristol Freighter Road

4 2.5 1 1 OFF-STREET PARKING

TOTAL FLOOR AREA: 176.0 sq/m | LAND SIZE: 211.2 sq/m



Ground floor plan



First floor plan



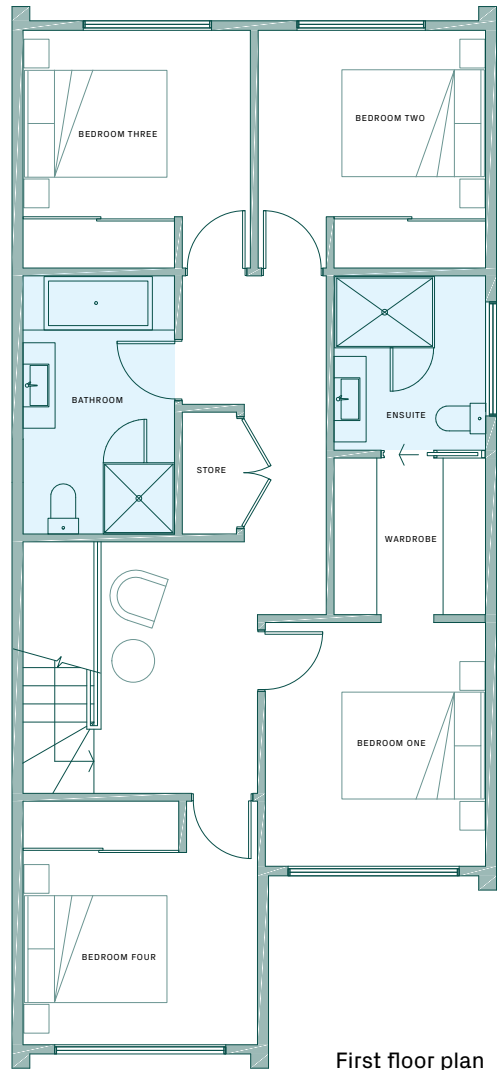
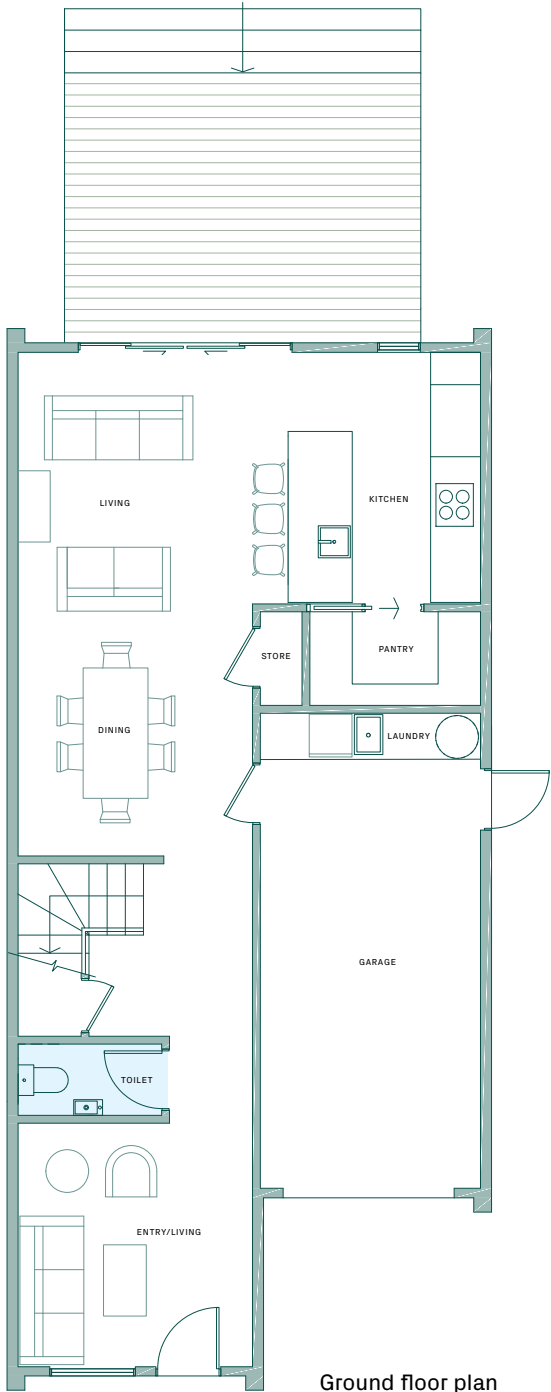
Briar Court



Lot 60 25 Bristol Freighter Road

4 2.5 2 1 OFF-STREET PARKING

TOTAL FLOOR AREA: 181.8 sq/m | LAND SIZE: 187.2 sq/m



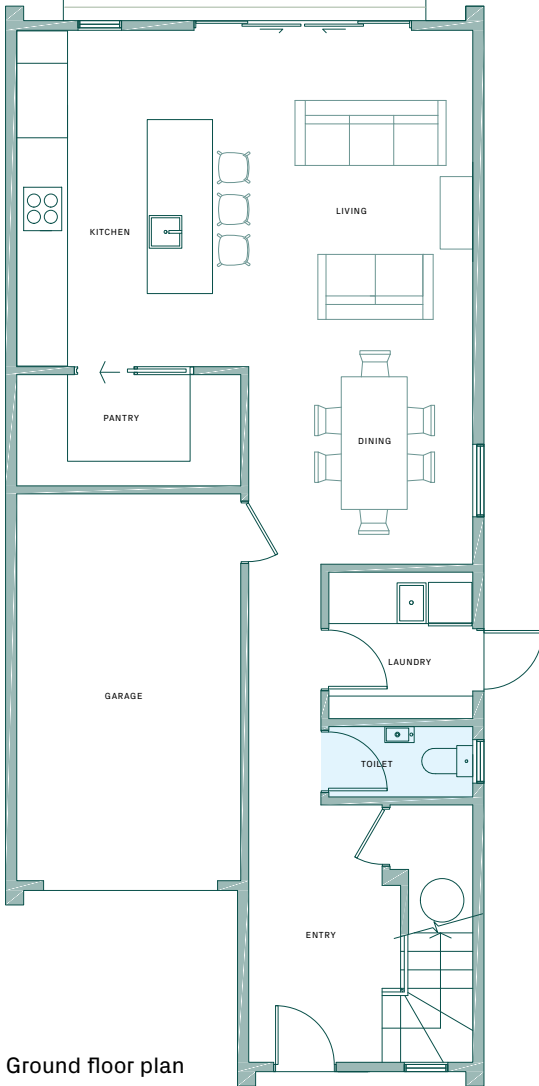
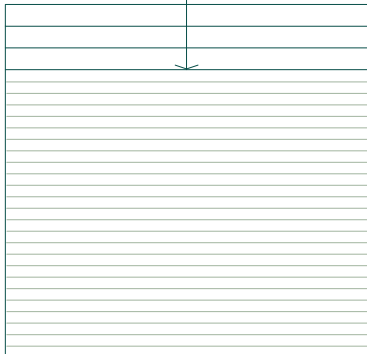
Briar Court



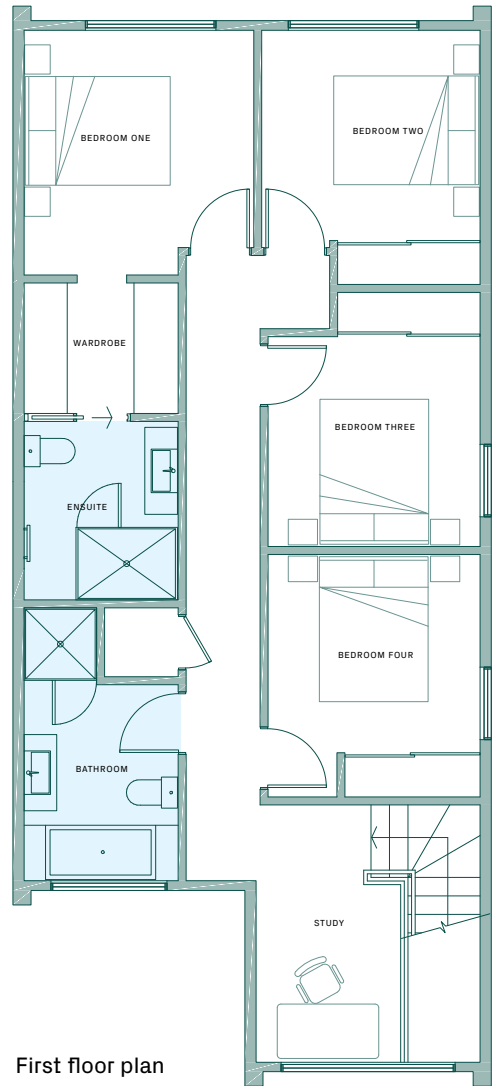
Lot 61 27 Bristol Freighter Road

4 2.5 1 1 OFF-STREET PARKING

TOTAL FLOOR AREA: 176.0 sq/m | LAND SIZE: 187.2 sq/m



Ground floor plan



First floor plan



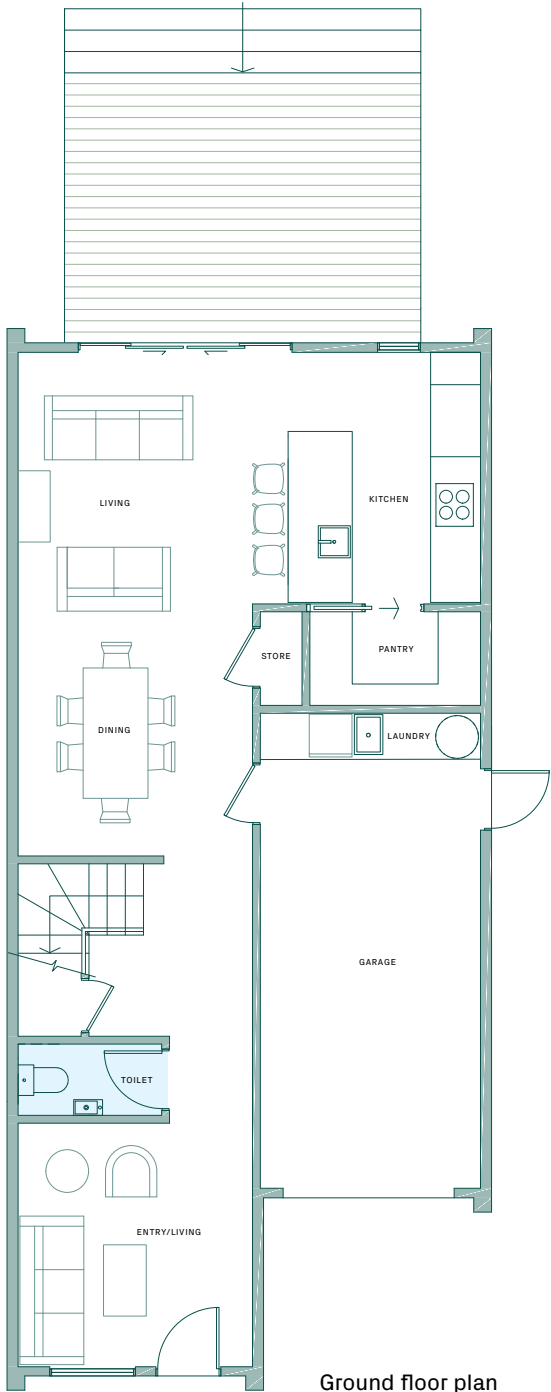
Briar Court



Lot 62 29 Bristol Freighter Road

4 2.5 2 1 OFF-STREET PARKING

TOTAL FLOOR AREA: 181.8 sq/m | LAND SIZE: 187.2 sq/m



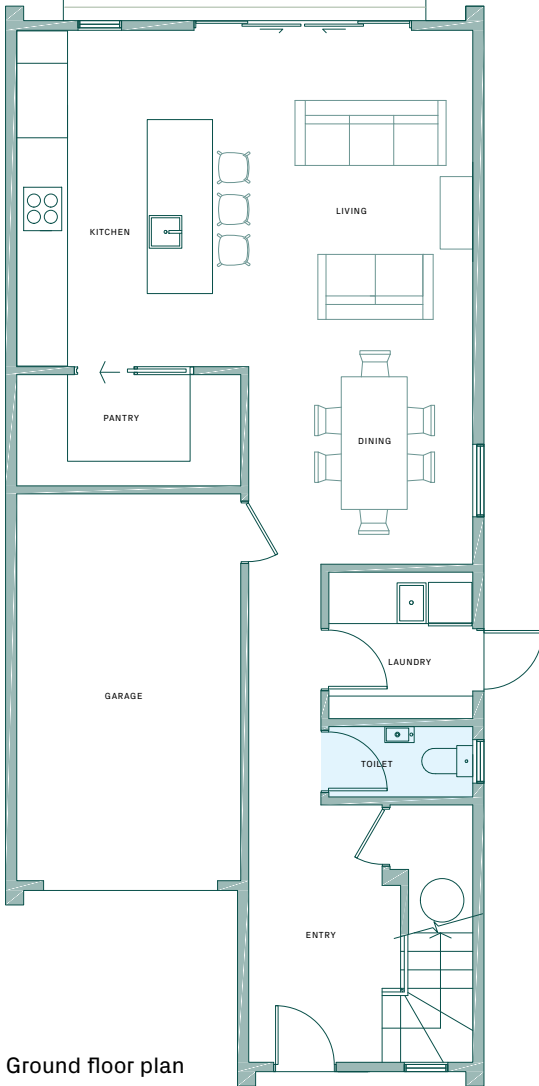
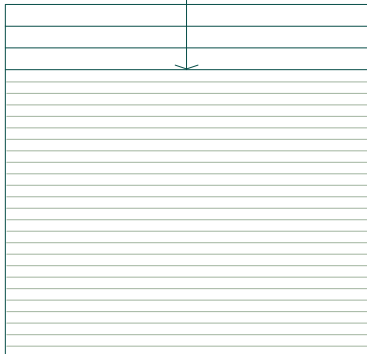
Briar Court



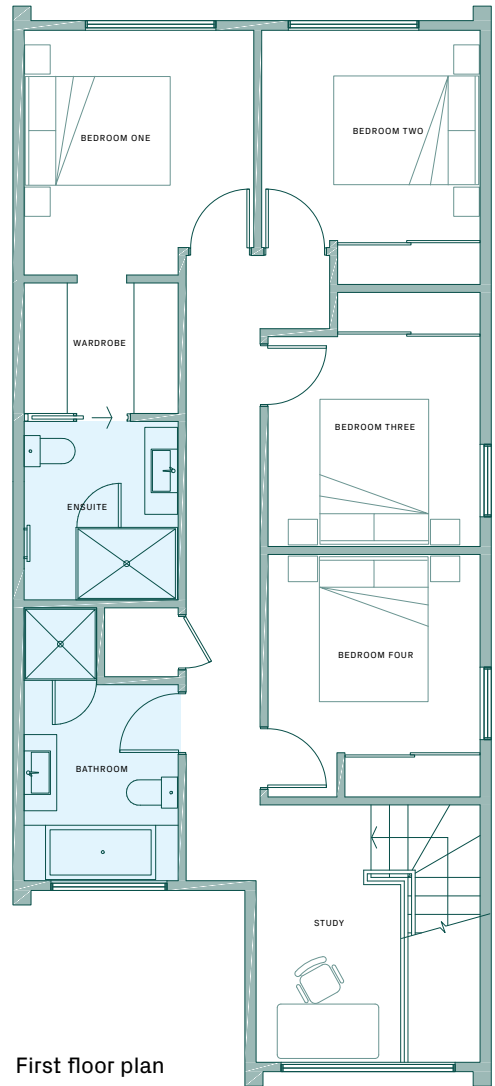
Lot 63 31 Bristol Freighter Road

4 2.5 1 1 OFF-STREET PARKING

TOTAL FLOOR AREA: 176.0 sq/m | LAND SIZE: 187.2 sq/m



Ground floor plan



First floor plan



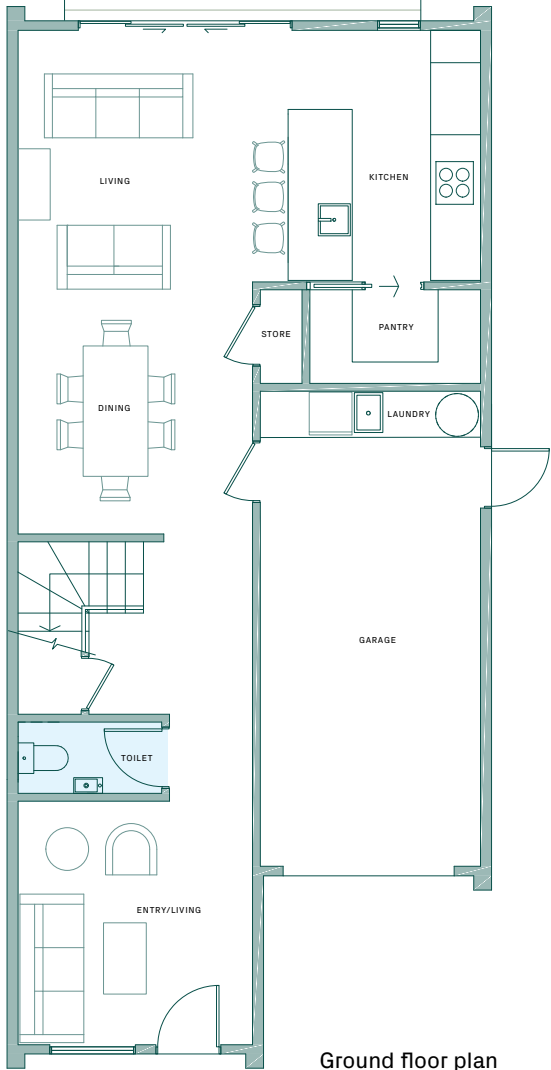
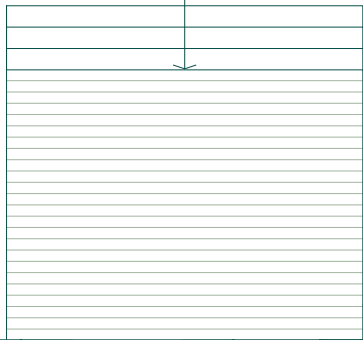
Briar Court



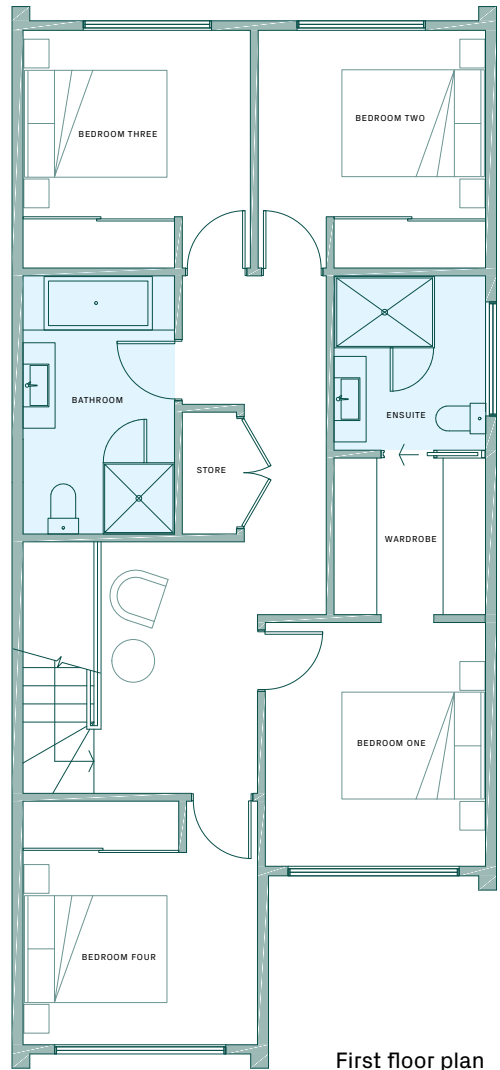
Lot 64 33 Bristol Freighter Road

4 2.5 2 1 OFF-STREET PARKING

TOTAL FLOOR AREA: 181.8 sq/m | LAND SIZE: 187.2 sq/m



Ground floor plan



First floor plan



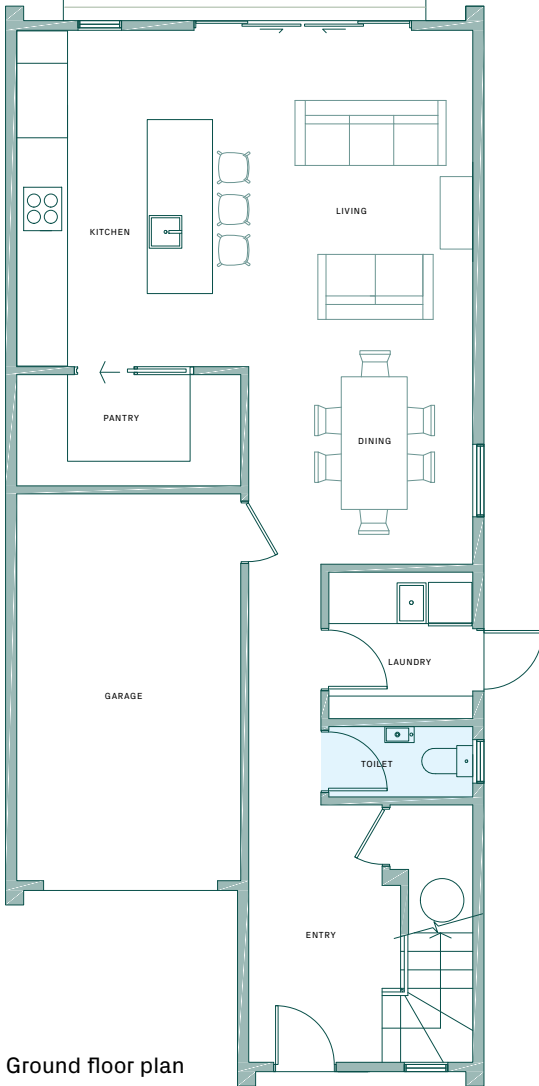
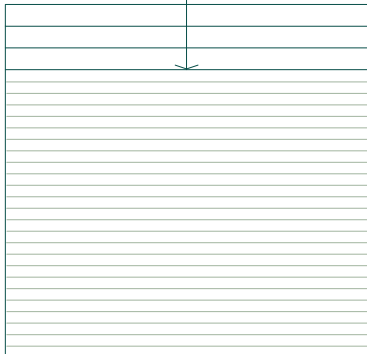
Briar Court



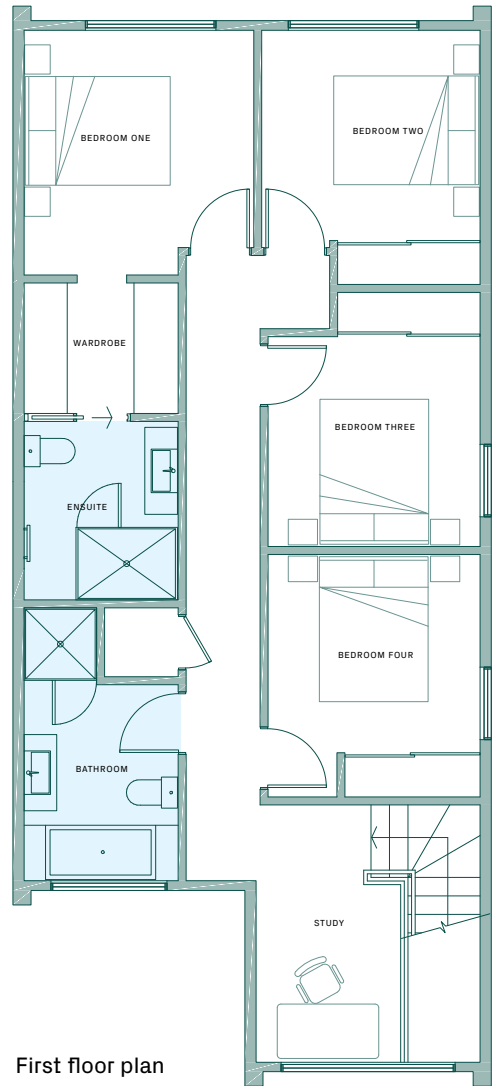
Lot 65 35 Bristol Freighter Road

4 2.5 1 1 OFF-STREET PARKING

TOTAL FLOOR AREA: 176.0 sq/m | LAND SIZE: 207.0 sq/m



Ground floor plan



First floor plan



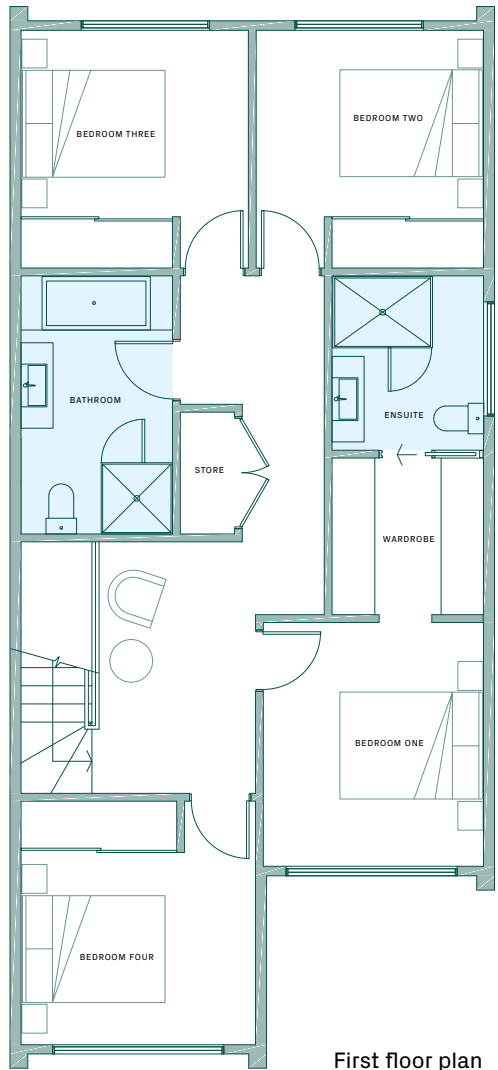
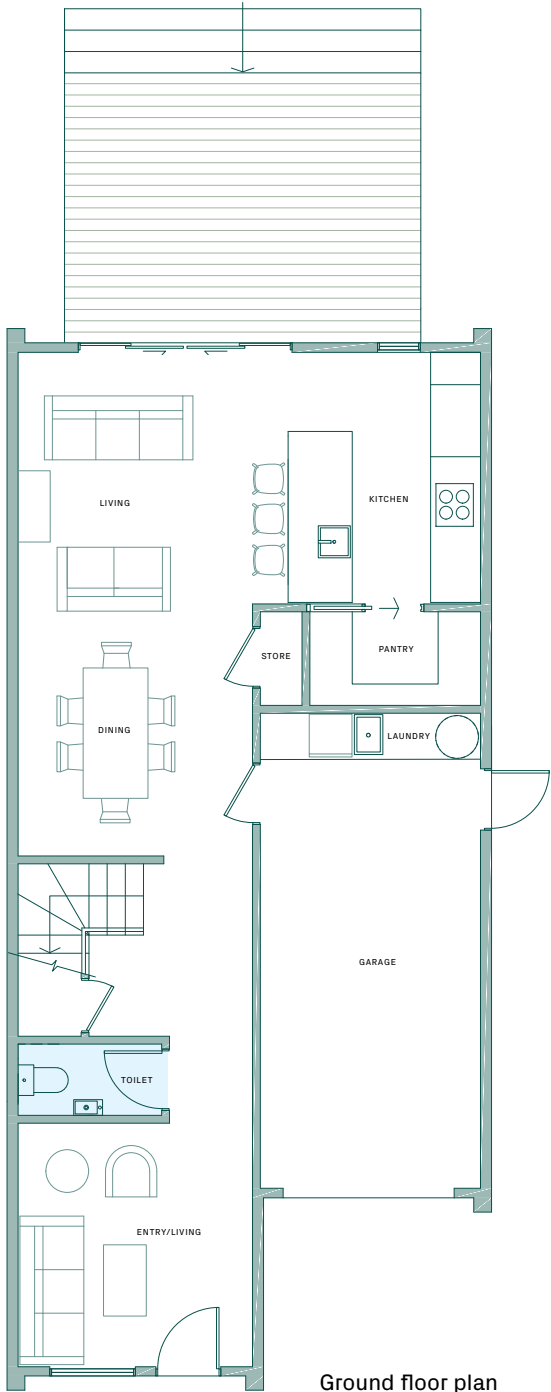
Briar Court



Lot 66 37 Bristol Freighter Road

4 2.5 2 1 OFF-STREET PARKING

TOTAL FLOOR AREA: 181.8 sq/m | LAND SIZE: 242.5 sq/m



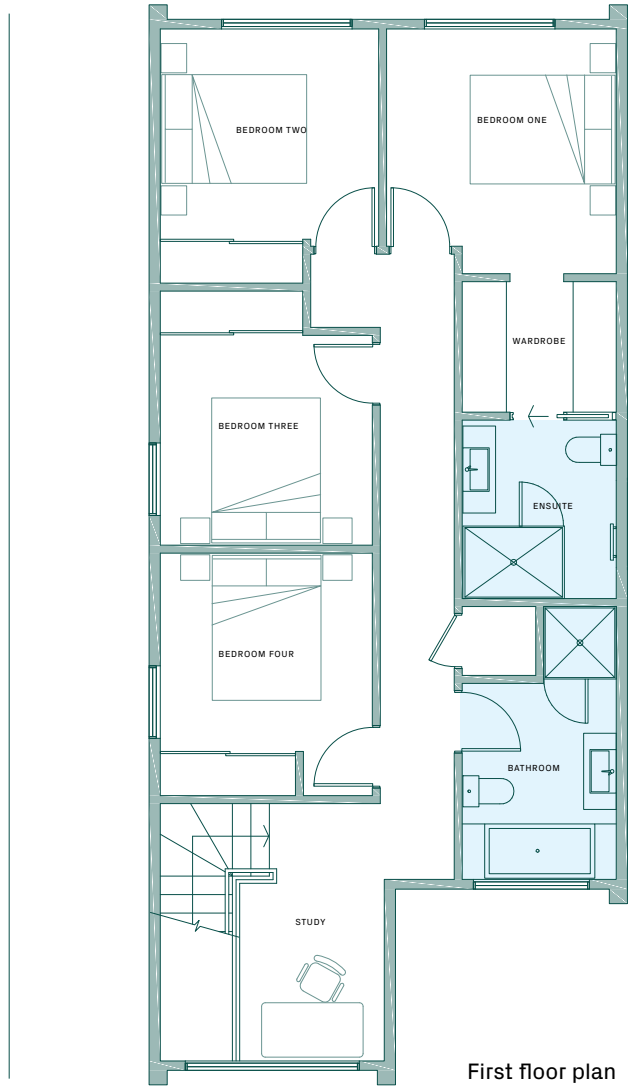
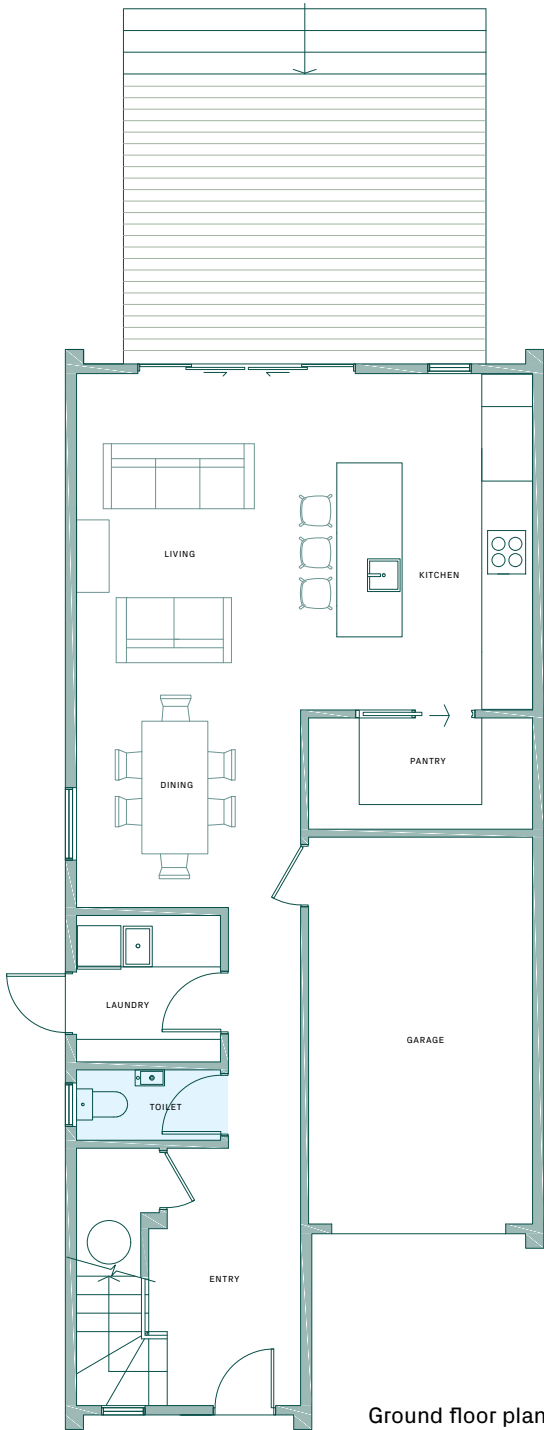
Briar Court



Lot 68 70 Waterlilly Street

4 2.5 1 1 OFF-STREET PARKING

TOTAL FLOOR AREA: 176.0 sq/m | LAND SIZE: 211.2 sq/m



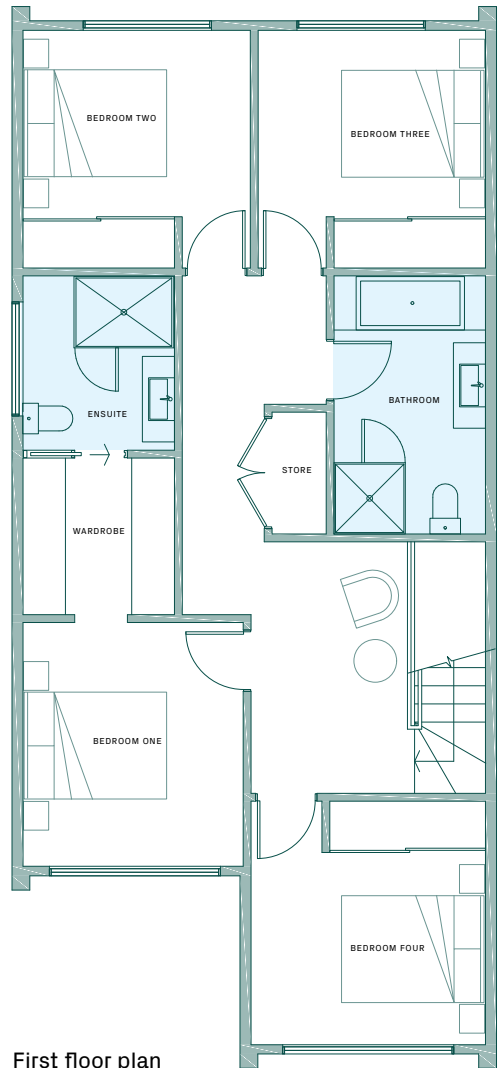
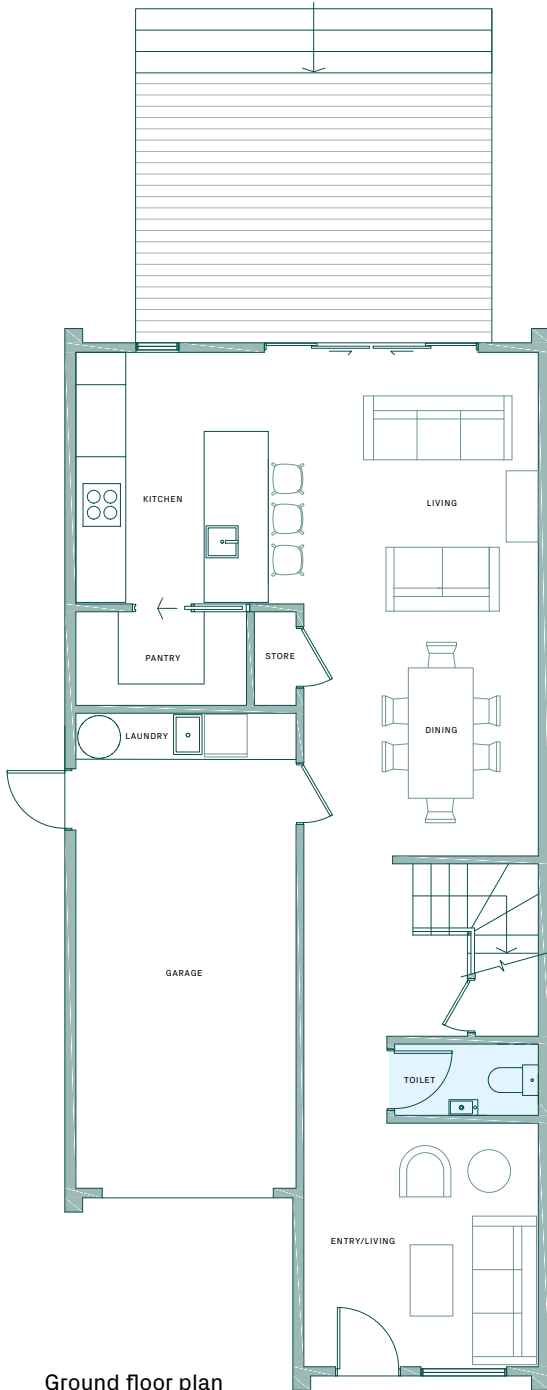
Briar Court



Lot 69 72 Waterlilly Street

4 2.5 2 1 OFF-STREET PARKING

TOTAL FLOOR AREA: 181.8 sq/m | LAND SIZE: 187.2 sq/m



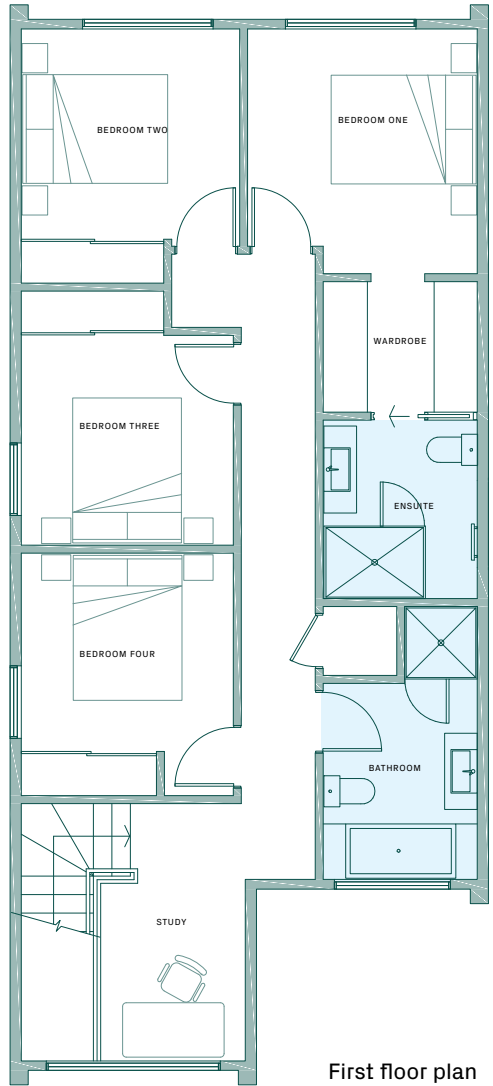
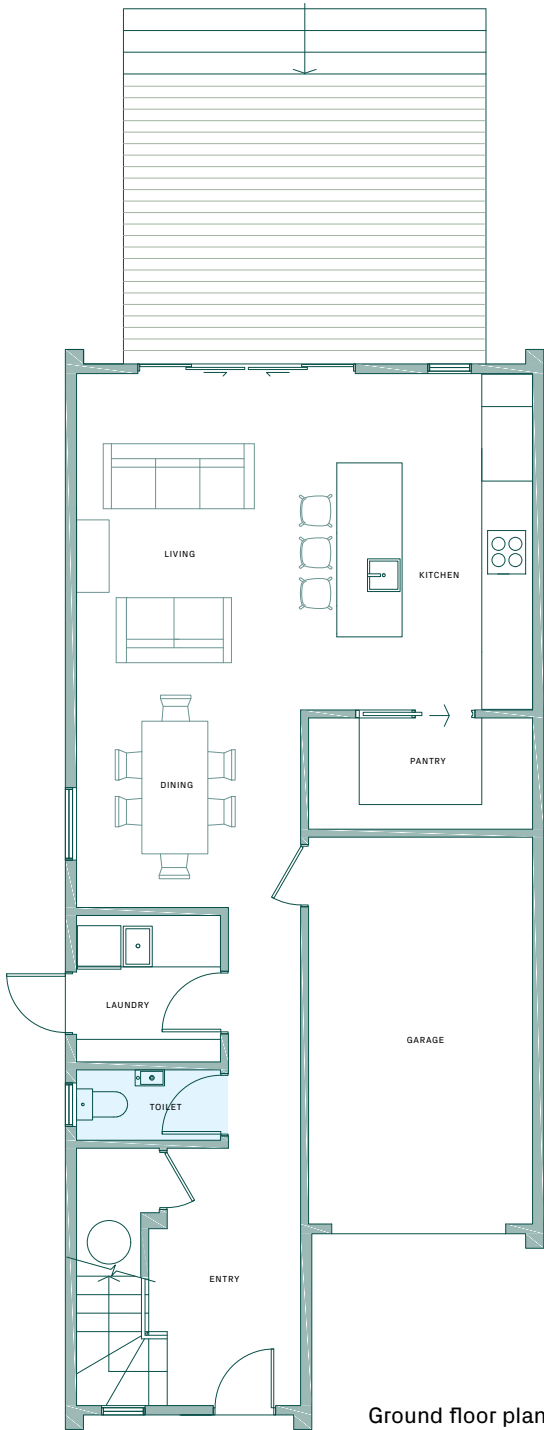
Briar Court



Lot 70 74 Waterlilly Street

4 2.5 1 1 OFF-STREET PARKING

TOTAL FLOOR AREA: 176.0 sq/m | LAND SIZE: 187.2 sq/m



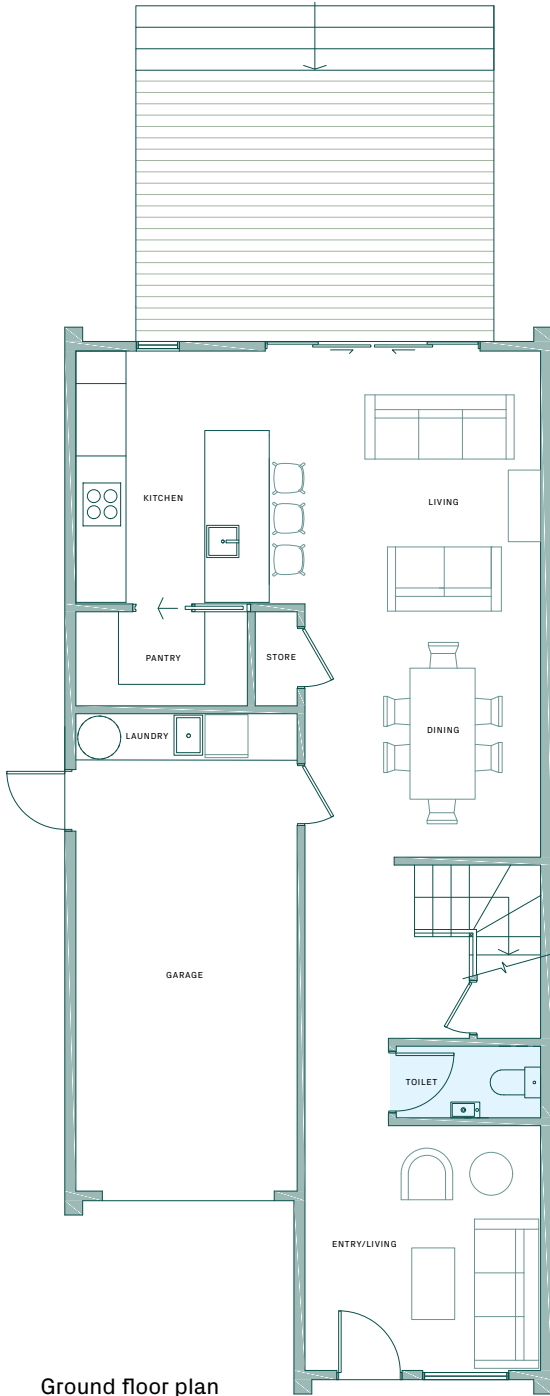
Briar Court



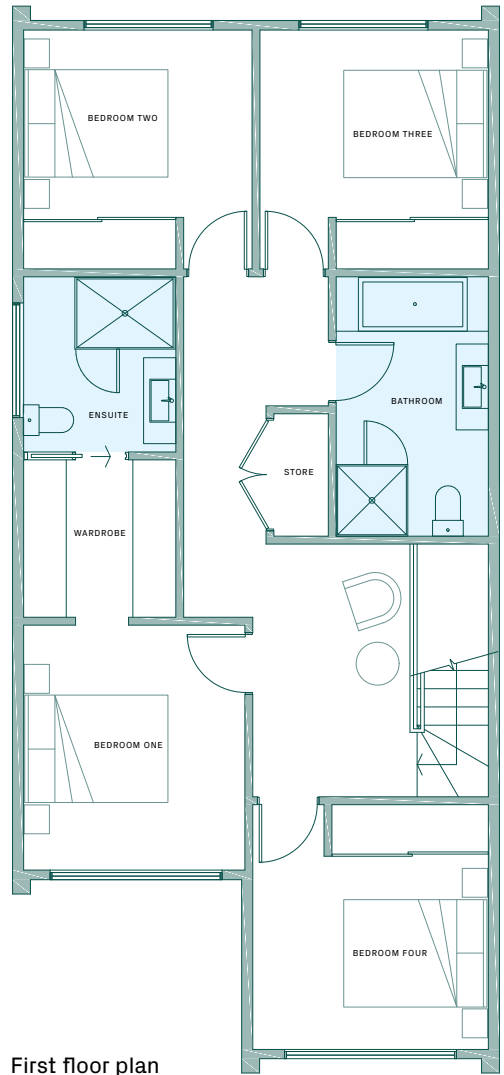
Lot 71 76 Waterlilly Street

4 2.5 2 1 OFF-STREET PARKING

TOTAL FLOOR AREA: 181.8 sq/m | LAND SIZE: 187.2 sq/m



Ground floor plan



First floor plan



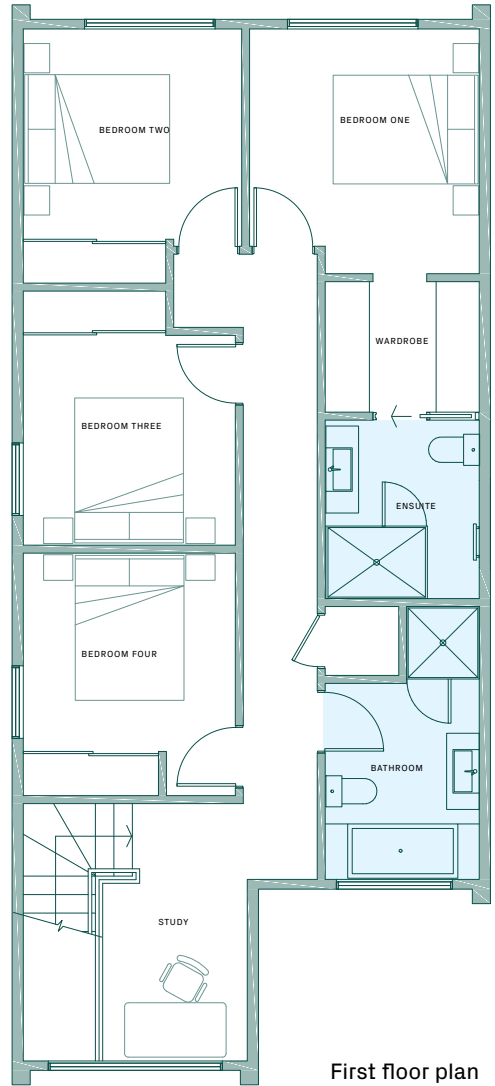
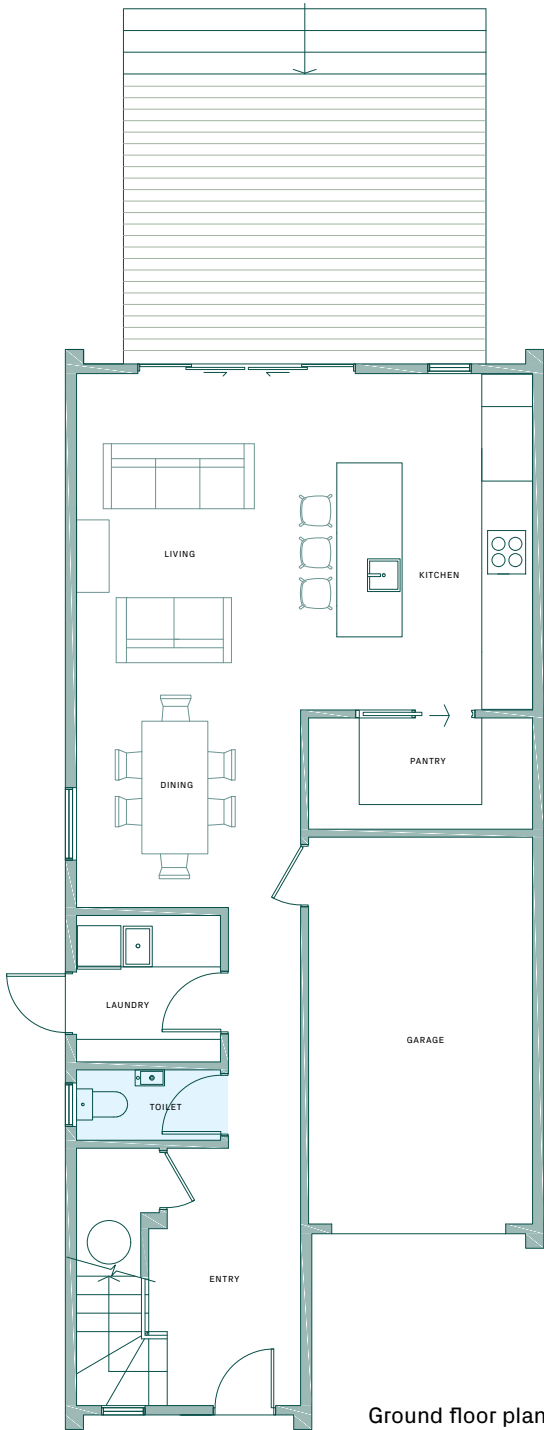
Briar Court



Lot 72 78 Waterlilly Street

4 2.5 1 1 OFF-STREET PARKING

TOTAL FLOOR AREA: 176.0 sq/m | LAND SIZE: 187.2 sq/m



Internal colour palettes

Internal colour palette 1

- Walls ① Dulux Cardona Half
- Ceilings + Doors ② Dulux Southern Alps
- Carpet ⑦ Inverness
- Laminate Floor ⑧ Oak
- Kitchen Cupboards ③ Melteca Balkal Puregrain
- Kitchen Benchtop ⑤ Engineered Stone
- Splashback ⑥ Subway Tile
- Tiles - main bath ④ Ritz
- Tiles - ensuite ④ Ritz



Internal colour palette 2

- Walls ① Dulux Mt Aspiring Half
- Ceilings + Doors ② Dulux Southern Alps
- Carpet ④ Mink
- Laminate Floor ⑧ Grey
- Kitchen Cupboards ③ Warm White Puregrain
- Kitchen Benchtop ⑥ Engineered Stone
- Splashback ⑦ Subway Tile
- Tiles - main bath ⑤ Urban Light Grey
- Tiles - ensuite ⑤ Urban Light Grey

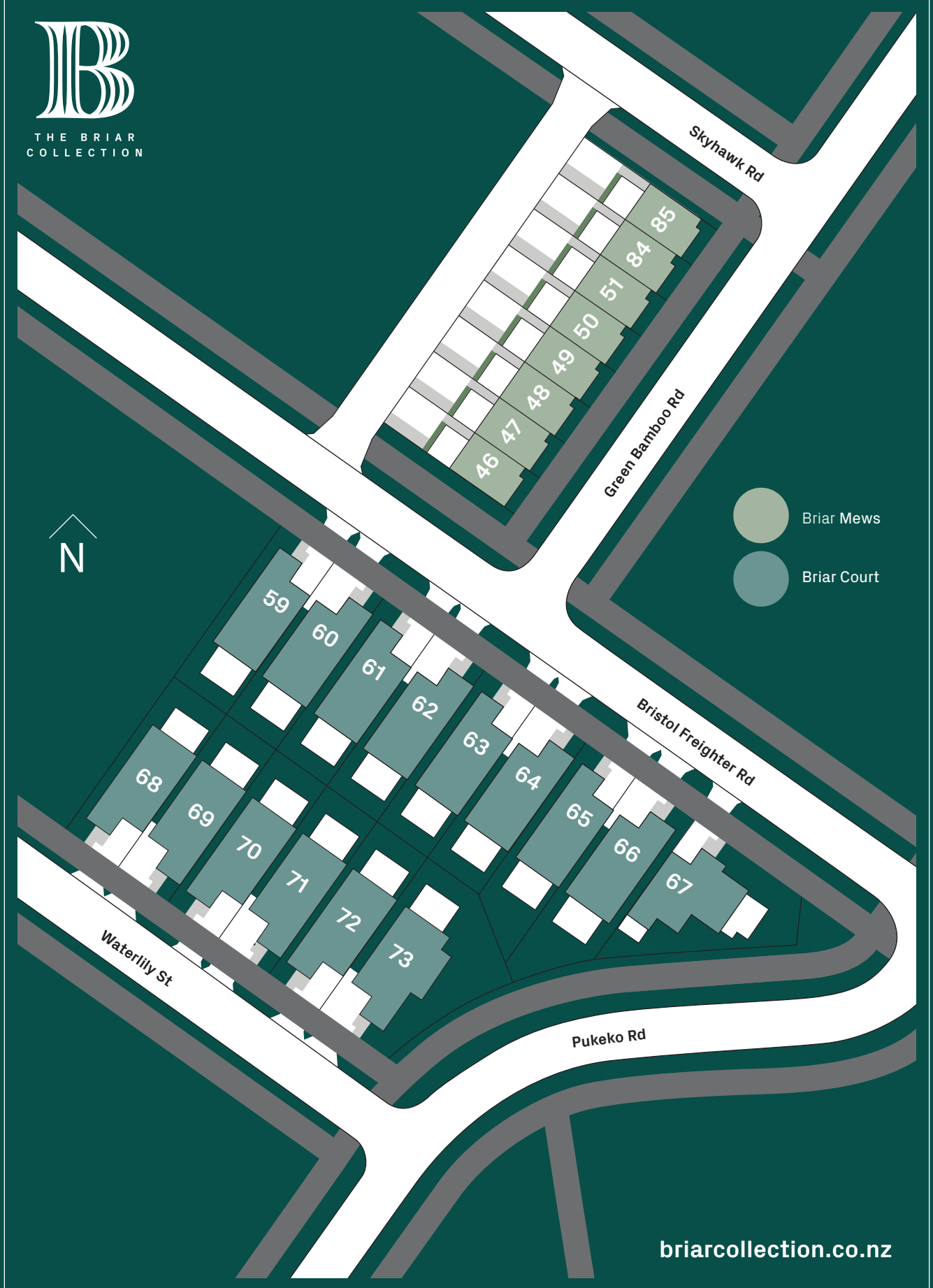
Internal colour palette 3



- Walls ① Dulux Mt Aspiring Half
- Ceilings + Doors ② Dulux Southern Alps
- Carpet ⑦ Skyscraper
- Laminate Floor ⑧ Light Grey
- Kitchen Cupboards ③ Blackened Elm Puregrain
- Kitchen Benchtop ⑤ Engineered Stone
- Splashback ④ Subway Tile
- Tiles - main bath ⑥ Urban Light Grey
- Tiles - ensuite ⑥ Urban Light Grey





THE BRIAR
COLLECTION



-  Briar Mews
-  Briar Court

briarcollection.co.nz

